

English

Chinese

Main Idea

3 LS 3.a 3 LS 3.b.

The arctic tundra is a cold biome with little rainfall. Tundra plants and animals have adaptations that help them survive.

主題思想

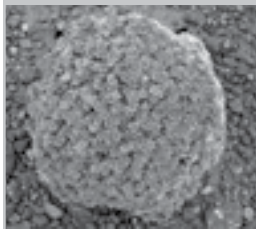
3 LS 3.a 3 LS 3.b.

北極凍原是一種雨量不多的寒帶生物群落區。凍原中的動植物對環境的適應能力可以幫助牠/它們生存下去。



The **arctic tundra** is a cold, dry biome above the Arctic Circle. (pp. 70-71)

北極凍原位於北極圈以北，是一種寒冷乾燥的生物群落區。(第 70-71 頁)



Arctic plants have adaptations that protect them from the cold and wind. (pp. 72-73)

北極帶的植物對環境的適應能力可以保護它們不受冰冷和寒風的侵襲。(第 72-73 頁)



Arctic animals have adaptations that help them survive in cold, snowy environments. (pp. 74-76)

北極帶的動物對環境的適應能力可以幫助牠們在寒冷多雪的環境中生存下去。(第 74-76 頁)