

English

Hmong

Main Idea

3 LS 3.a 3 LS 3.b.

The arctic tundra is a cold biome with little rainfall. Tundra plants and animals have adaptations that help them survive.

Niam Tswvyim

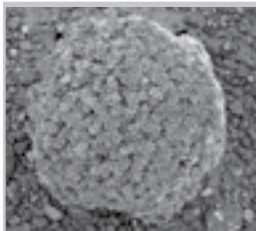
3 LS 3.a 3 LS 3.b.

Tiaj av daus yog ib lub chaw xeebtxawm nrog ntoo nag tsawg. Nroj thiab tsiaj av daus muaj kev yoog raws pab lawv nyob tau.



The **arctic tundra** is a cold, dry biome above the Arctic Circle. (pp. 70–71)

Tiaj av daus yog ib lub chaw xeebtxawm no, qhuav nyob qaum Vojvoog Artic. (pp. 70–71)



Arctic plants have adaptations that protect them from the cold and wind. (pp. 72–73)

Nroj Arctic muaj kev yoog raws uas pab lawv ciaj sia tau hauv cheebtsam no thiab muaj daus. (pp. 72–73)



Arctic animals have adaptations that help them survive in cold, snowy environments. (pp. 74–76)

Tsiaj Arctic muaj kev yoog raws uas pab lawv ciaj sia tau hauv cheebtsam no thiab muaj daus. (pp. 74–76)