

English

Hmong

Main Idea

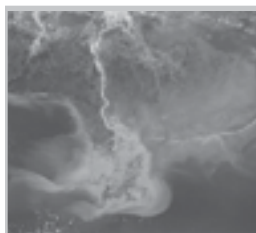
4 ES 5.a 4 ES 5.c.

The movement of weathered rock from one place to another is called erosion. As wind and water move rock from one place to another, the shape of the land changes.

Niam Tswvyim

4 ES 5.a 4 ES 5.c.

Zeb tsua ntsoog txoj kev txav ntawm ib qhov chaw rau lwm qhov hu ua kev kuav. Thaum cua thiab dej tshem zeb tsua ntawm ib qhov chaw rau lwm qhov, lub hajkhawv av hloov.



Erosion and deposition

move sediments from one **place** on Earth's surface to another. (pp. 204-205)

Kev kuav thiab kev tso

zeb av tshem tau tej txheej av ntawm ib qhov **chaw** rau lwm qhov saum daim npoo Niam Av. (pp. 204-205)



Erosion is affected by soil type, sediment size, and wind and water strength. (pp. 206-207)

Kev kuav muaj feem cuam rau hom av, tej cev txheej av, thiab lub zog cua thiab dej. (pp. 206-207)



There are methods farmers can use to conserve soil. (p. 208)

Neeg ua teb siv zoo hom txuj los fwm av cia. (p. 208)