

English

Hmong

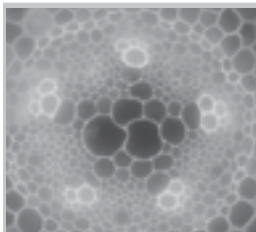
**Main Idea** 5 LS 2.a  
 Vascular plants have special structures for the transport of materials such as sugar, water, and minerals.

**Niam Tswvyim** 5 LS 2.a  
 Cov nroj tsuag nrog plawv muaj cov hajkhawv tshwjxeeb los xa khoom xwsi suab thaj, dej, thiab zaub mov.



Vascular plants have a transport system made up of **roots, stems,** and **leaves.** (pp. 82-83)

Nroj tsuag nrog plawv muaj ib tus txheejtxheem xa zaub mov raws **cag, kav,** thiab **nplooj.** (pp. 82-83)



**Xylem** carries water and minerals from the roots to the leaves. **Phloem** carries food from the leaves to the rest of the plant. (pp. 84-85)

Daim ntaub **xylem** xa dej thiaj zaub ntawm cov cag rau cov nplooj. Daim ntaub **phloem** xa zaub mov ntawm cov nplooj rau tas nrho lub cev nroj tsuag. (pp. 84-85)



Different plants have different kinds of roots. **Roots** absorb water and minerals into the plant. (p. 86)

Ntau hom nroj tsuag muaj ntau hom cag. Cov **cag** nqus dej thiab zaub mov los rau lub cev nroj. (p. 86)